



**Government of India
India Meteorological Department
Regional Meteorological Centre
Mumbai – 400005**

**Press Release Dated: 17/06/2019
Time of Issue: 1300 hrs. IST**

Special Weather Forecast Bulletin

Sub: Cyclonic Storm 'VAYU' over Northeast Arabian Sea & neighbourhood weakened into Deep Depression over the same area

The Cyclonic Storm 'VAYU' (pronounced as VAA'YU) over northeast Arabian Sea & neighbourhood moved northeastwards with a speed of about 13 kmph in last six hours, weakened into a **Deep Depression** and lay centred at 0830 hrs IST of 17th June, 2019 near latitude 21.9°N and longitude 66.8°E over Northeast Arabian Sea & neighbourhood, about 260 km west-southwest of Naliya (Gujarat), 240 km west-southwest of Dwarka (Gujarat) and 340 km west-southwest of Bhuj (Gujarat).

The system is very likely to weaken into a depression during next 06 hours. The system is very likely to move northeastwards and cross north Gujarat coast by midnight of 17th June 2019 as a Depression.

Forecast track and intensity are given in the following table:

Date/Time(IST)	Position (Lat. °N/ long. °E)	Maximum sustained surface wind speed (Kmph)	Category of cyclonic disturbance
17.06.19/0830	21.9/66.8	50-60 gusting to 70	Deep Depression
17.06.19/1130	22.1/67.2	50-60 gusting to 70	Deep Depression
17.06.19/1730	22.7/68.0	40-50 gusting to 60	Depression
17.06.19/2330	23.2/68.7	35-45 gusting to 55	Depression
18.06.19/0530	23.7/69.8	20-30 gusting to 40	Well Marked Low

Warnings:

(i) Heavy rainfall warning:

Sub-Divisions	17 June 2019*	18 June 2019*
Saurashtra & Kutch	Rainfall at many places with heavy falls at isolated places	Rainfall at many places with heavy falls at isolated places
North Gujarat region	NIL	Rainfall at many places with heavy to very heavy falls at isolated places
South Rajasthan	Rainfall at many places with heavy falls at isolated places	Rainfall at many places with heavy to very heavy falls at isolated places

Note: * Rainfall till 0830 IST of next day.

Legends: **Yellow: Be Updated; Orange- Be prepared; Green: No warning**
Heavy rain: 64.5-115.5 mm/day; Very heavy rain: 115.6-204.4 mm/day

(ii) Wind warning

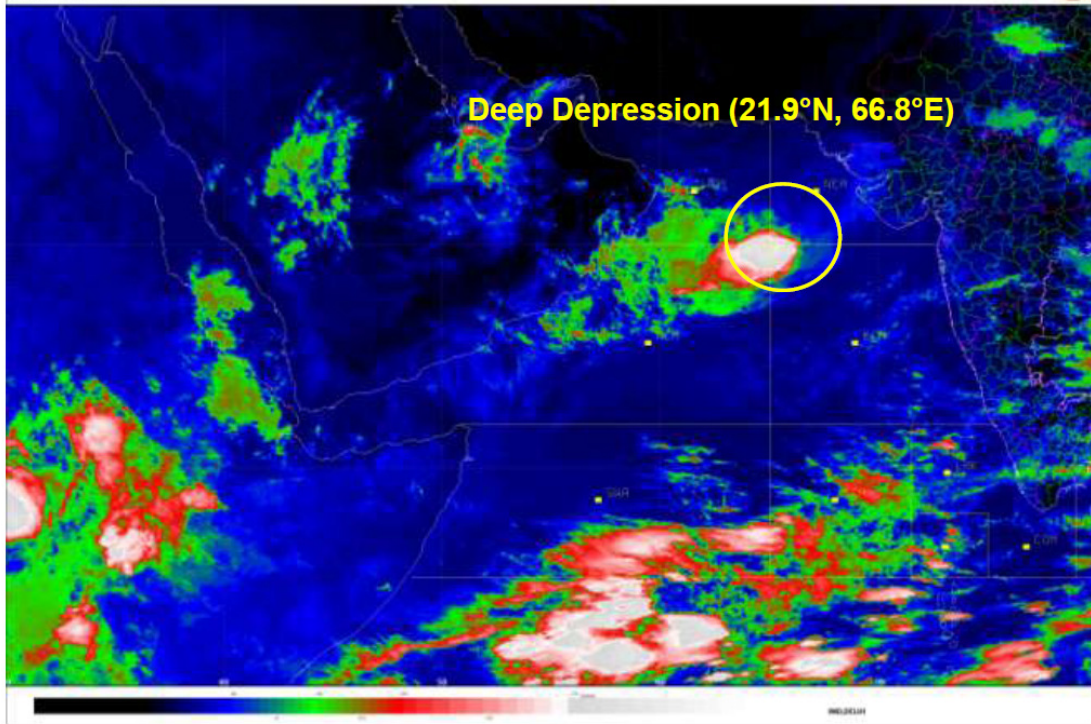
- Squally wind speed of the order of 50-60 kmph gusting to 70 kmph is prevailing over northeast Arabian Sea and adjoining central Arabian Sea and it is very likely to decrease gradually becoming 40-50 kmph gusting to 60 kmph by the night of 17th June, 2019. Squally wind speed of the order of 40-50 kmph gusting to 60 kmph very likely to commence along & off Gujarat coast from the evening of 17th.

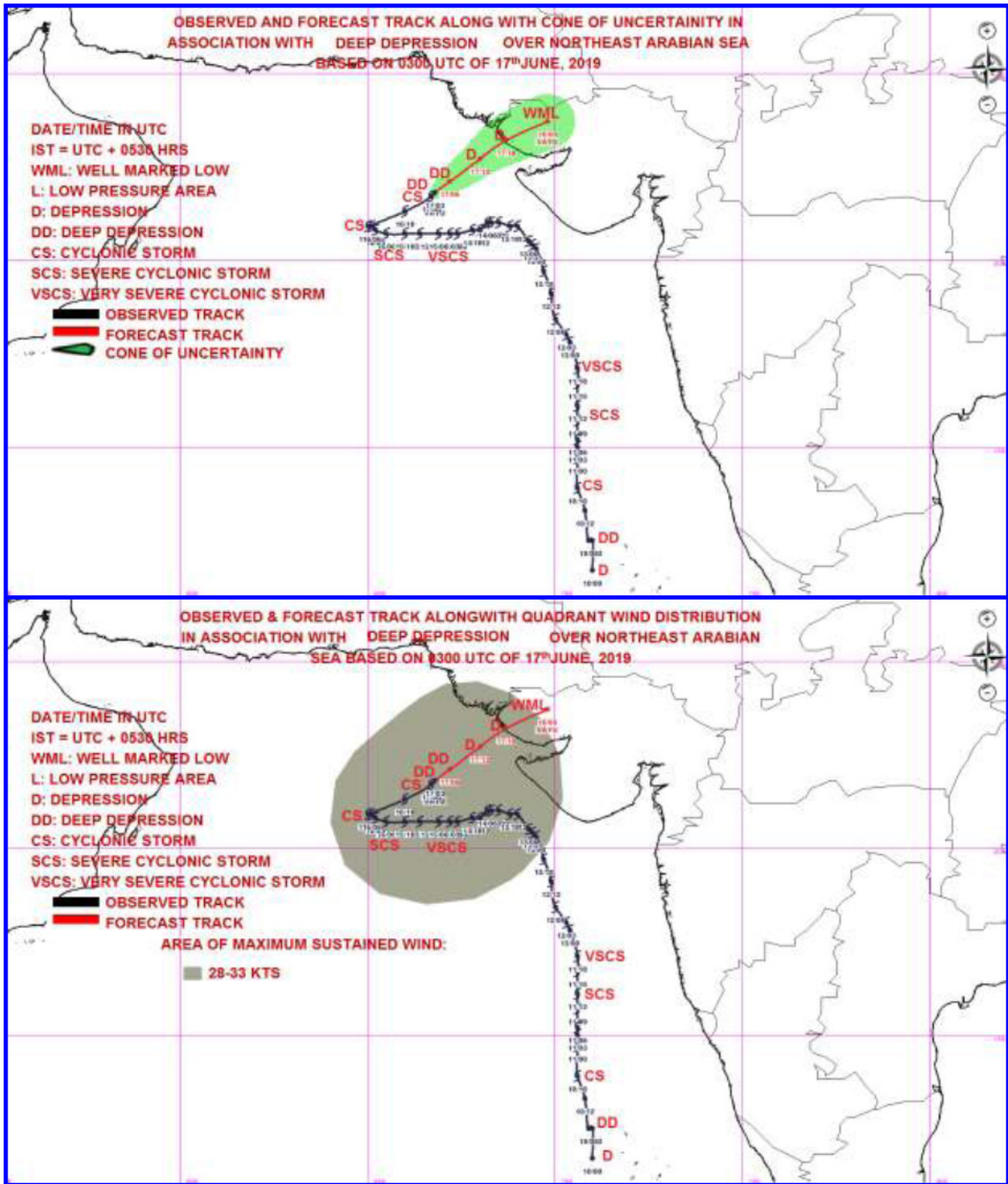
(iii) Sea condition

- The Sea condition is very rough over northeast Arabian Sea and adjoining areas of central Arabian Sea and likely to become rough to very rough by evening of 17th June, 2019.
- The Sea condition is very likely to be rough to very rough along & off Gujarat coast on 17th June 2019.

(iv) Fishermen Warning

- The fishermen are advised not to venture into north Arabian Sea, northern parts of central Arabian Sea and along & off Gujarat coast during next 24 hours.
- Total suspension of fishing operations during next 24 hours.





MSW(knot)/kmph)	Impact	Action
28-33 /(52-61)	Very rough seas.	Total suspension of fishing operations

Kindly visit the IMD website <http://www.imd.gov.in> or <http://www.imdmumbai.gov.in> for current weather updates. Regional Weather Forecasting Centre RMC Mumbai

Phone: +91 022 22150431/22174719/22174735